



## PARISH COUNCIL

The Parish Council is now supported by Terry Heath, Responsible Financial Officer and Gilly Lowe (pictured), our new Parish Clerk.

Gilly has 6 years of experience in clerking at parish councils of varying sizes, and will combine her role here with other part time roles as clerk at Long Sutton and Responsible Financial Officer for Crowhurst Parish Council. She says she is looking forward to picking up the ropes from Terry and getting to know the locality. In her spare time, Gilly enjoys walking her dog, a Hungarian Vizsla, playing tennis and golf, gardening, cooking and yoga. Contacting the clerk remains the same, by email on [clerk@stoke-sub-hamdon-pc.gov.uk](mailto:clerk@stoke-sub-hamdon-pc.gov.uk).



The Parish Council has been made aware of increased dog fouling in various parts of the village including Castle Street, West Street and the High Street. We know the majority of owners always pick up and dispose of their dogs excrement. However, we would like to remind those who fail to pick up that it is an offence that carries a potential fixed penalty of £100. Dog fouling is not only deeply unpleasant, it can be dangerous, as dog excrement left in public spaces can cause Toxocariasis which is a nasty infection. Please pick up after your dog. Thank you.

## VILLAGE ARTISTS GROUP

Our Spring term sessions are now in full swing with lots of fresh artistic inspiration! Do come and join us and enjoy the company of a very friendly group of artists. We are looking forward to our forthcoming drawing workshop with Jonathan Hodgson on Saturday, 8 March from 10:00 – 15:00 (with a break for lunch). <https://www.facebook.com/jonhodgsonart/>

We meet at Stoke-sub-Hamdon Memorial Hall on Tuesday evenings 7.30 to 9:30 pm and Friday mornings 10.00 to 12.00 noon during school term time. First visit FREE! Please contact Andrew on (01935) 823691, [SSHTheVillageArtistsGroup@gmail.com](mailto:SSHTheVillageArtistsGroup@gmail.com) Facebook: Stoke Sub Hamdon The Village Artists Group.

## MEMORIAL HALL NEWS

We are pleased to announce that professional stage lighting will be installed in the Hall from 5th to 7th February, we apologise for disruption to bookings on those dates, but look forward to the benefits for future hall productions.

Volunteering opportunities are still available, please do take a look at our website

<http://www.stokememorialhall.co.uk/> to find out more about what the Hall has to offer, or contact Rebecca on 01935 823180.

## STOKE PERFORMING ARTS GROUP

This month sees our first ever variety show. Featuring SPAG and friends (including children from the local Star Dance Company), the two performances on 22nd February will feature skits, songs, drama, monologues, juggling and much more.

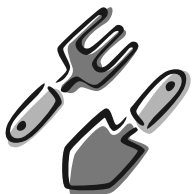
As usual, tickets for the performances (14:30 & 19:00) will be available from the Community Shop. – But hurry, they are guaranteed to sell out fast!

Stoke Performing Arts Group  
and friends  
Present a  
**SPAG TACULAR VARIETY SHOW**  
ONE DAY ONLY  
22ND FEBRUARY 2025  
Memorial Hall, Stoke sub Hamdon TA14 6PZ  
**Saturday 22nd February 2025**  
Matinee at 2.30pm - doors open 2.00pm  
Refreshments served  
Evening performance at 7.00pm - doors open 6.20pm  
Bar and nibbles available  
Tickets | £10.00 Adult | £5.00 Child  
(Child 16 years and under)

## STOKE SUB HAMDON GARDENING CLUB

Wednesday 26th February 2025

We are delighted to welcome as this month's speaker Mike Burks, one of the founders of The Gardens Group (Brimsmore Garden Centre, Castle Gardens at Sherborne, and Poundbury Gardens). His subject is "Garden Folklore" – do come and explore this fascinating and wide-ranging topic with us.



Free refreshments; plant sales; raffle. Visitors very welcome - £3.

This meeting includes our AGM and will start at the earlier time of 7.00 p.m.

Venue: The Memorial Hall, Stoke-sub-Hamdon.

## STOKE COMMUNITY SHOP: YOUR VILLAGE – YOUR SHOP

We are changing our Sunday opening hours which will now be: 9am-12 noon

What a cold start to 2025! We are so pleased that we have a decent heating system in the shop, do come in and make use of it!



Our thanks go to Katherine Rake and Sue Menzies who have stepped down from the board of directors after 5 years ably steering the shop to the place it is today at the heart of village life.

Sadly one of our earliest directors, Sally Davey, passed away after a short illness last month. She will be missed by all of us and we are grateful she spent so much time guiding the finances of the shop in its early days. Rest in peace Sally, with Paul and the dogs.

The shop provides an essential service for villagers who have difficulty shopping elsewhere and for those last minute or forgotten items. It is important that it remains economically sustainable so this service continues.

If you are a regular customer we thank you for your support, if not, please come and tell us why not and if there is anything that would convert you, come and let us know what you would like to see.

Just in case newer residents of Stoke are not aware, the shop is owned and run as a community benefit company. Staffed and managed by volunteers. The dedication of our volunteers continues to be what makes it possible to run the store for the benefit of the whole village. Thank you all for your hard work.

We urgently need new volunteers to help run the shop. Volunteering is an ideal way of getting involved in village life and making new friends. Drop into the shop for a chat with one of our team or email [volunteers@stokeshop.co.uk](mailto:volunteers@stokeshop.co.uk). You can also find out more – and download an application form – at [www.stokeshop.co.uk/volunteering](http://www.stokeshop.co.uk/volunteering)

For more information about the shop and how you can get involved, visit the web page [www.stokeshop.co.uk](http://www.stokeshop.co.uk) or [ww.facebook.com/stokecommunityshop](http://ww.facebook.com/stokecommunityshop)

## KNIT AND NATTER GROUP

The Knit and Natter Group has moved venue, and now meets weekly on Wednesdays in the Fleur-de-Lis between 10:30 and 12:30. In 2024 the group managed to knit 21 blankets for the Neonatal Unit at Yeovil Hospital, plus 13 scarves for the Christmas Shoeboxes for the Homeless. Newcomers are always welcome.

Just turn up with your needles and yarn, and we'll be delighted to see you.



## CHARITY SHOP

In January, the Charity Shop was pleased to welcome two new volunteers – given how much busier the shop is growing, it's always great to welcome new volunteers, whether to work in the shop or behind the scenes. We were however saddened to hear of the death of Suzanne Drury in December 2024, who was one of the very first volunteers in the Charity Shop (in its North Street days), and whose support for the shop is fondly remembered. Donations collected in Suzanne's memory are being split between the Palliative Care team at Yeovil District Hospital and Dementia Care.

## YOUTH GROUP

The Youth Group at Hamdon Youth & Family Centre is open for children aged 8 and over from 18:30 to 20:30 on 17th February. This session will include pizza-making and Hawaiian themed fun. Contact Janet Richards for details. [janet@cyp.me.uk](mailto:janet@cyp.me.uk)

**COMMUNITY SPEED WATCH**

As some of you will have seen we are continuing regular speed watch sessions up around the Stanchester area. This is proving to have beneficial effects on the traffic while we are visible. However the Speed indicator device (SID) data tells a different story when we are not there.

The SID has been in East Stoke capturing data in two different modes. While the figures were displayed, a total of 19,645 vehicles passed it. Highest speed recorded was 83 MPH!

**Over the course of the 7 day period:**

50 were recorded 46 - 65+ MPH
84 were recorded 41- 45
384 were recorded 36-40
1760 were recorded 31 -35

**Blind (so not showing the numbers) for a 5 day period:**

Total vehicles 18,204,
highest speed 71 mph
1,457 vehicles recorded 31 - 65+ mph

Please bear in mind that this area is maximum of 30mph but it should be 20 mph during school admission and finishing times.

Just as a heads up - while we have been observing the traffic we have seen a lot of cars that have their rear number plates obscured by dirt this is an offence for which you can be stopped by the police.

The group of volunteers continues to grow, we are committed to working with the community to help reduce the speeding within our community in whatever form that takes.

If you would like to be part of this proactive group then please do not hesitate to contact either myself Lyn Foley (07714005265) or Anita Moore StokesHamSS24@outlook.com)

**MEMORIAL HALL FIM NIGHT**

**Saturday, 15th February 2025 6pm**

**Our film this month is Wicked - cert. PG.**

The story is about two young witches: Elphaba, whose skin is green, and Glinda, who is blonde and beautiful. They dislike each other at first but soon form an unlikely bond. The musical follows them from their girlhood friendship and explains how Elphaba became the Wicked Witch and Glinda became the Good Witch.

Doors open at 6pm. for a 6:30pm start. Cash or cards £5. We look forward to seeing you!

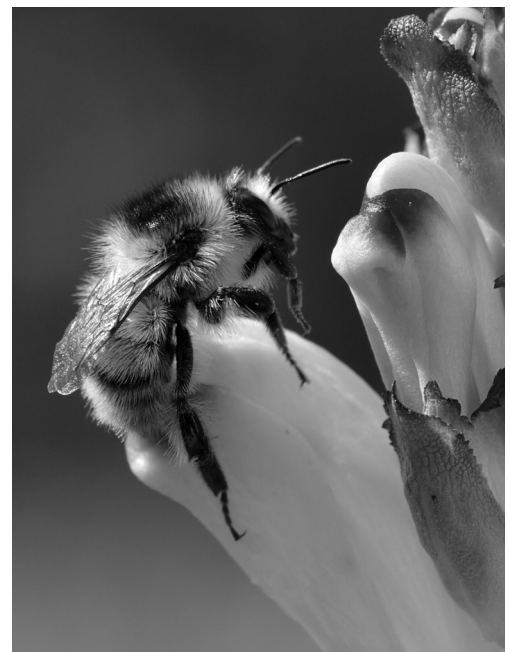


**RestPoll**

**LOCAL BUMBLEBEE CONSERVATION RESEARCH**

The shrill carder bumblebee (*Bombus sylvarum*) was once found across much of England and Wales but has rapidly declined over the past 60 years, mainly driven by habitat loss. It is now only found in five locations in the UK, with Somerset being one of the last strongholds.

Researchers from the University of Cambridge and the Bumblebee Conservation Trust are researching how farmland supports the shrill carder bumblebee and other insect pollinators in Somerset as part of the Restoring pollinator habitats across European agricultural landscapes (RestPoll) project. The work is led by Jacqui James, a postgraduate researcher from Cambridge's Department of Zoology. We are looking for field sites in the local area to survey three times per year in 2025 and 2026 and have contacted some local farms and landowners. If you are interested in the project, you can email Jacqui at [jasj3@cam.ac.uk](mailto:jasj3@cam.ac.uk). More information about the project can be found here: <https://restpoll.eu>.



## CONTACTS

### CONTACTS

ST MARY'S (Church of England) – Rev Nick Clarke 07842 192402  
revnickclarke@gmail.com www.hamhillchurches.org

ALL SAINTS HALL Bookings – Ann Davidson 07709 609488

BOYS BRIGADE at Martock Christian Fellowship Ian Rumbelow 07851 817927

BROWNIES at HY&FC – Sarah Redington 07412 084014  
stokesubhamdonbrownies@gmail.com

FLEXERCISE FOR FUN at Oak Tree House Di Ramsay 0845 6434702

FOOTBALL – Senior Teams Steve Deane 07881 464280  
stevekatharine@hotmail.co.uk

FOOTBALL – Junior Teams Tim Brooks 07788 654231 stokefcchair@gmail.com

GARDENING CLUB at Memorial Hall Tricia 01935 823691  
sec.sshgardeningclub@gmail.com

HAM HILL VOLUNTEER RANGERS Paul McNeill 07973 887129

HAMDON YOUTH & FAMILY CENTRE - to be confirmed

HAMDON YOUTH GROUP (8 – 18 yrs) Janet Richards janet@cyp.me.uk

HISTORY GROUP Carol Parker 01935 825393

MEMORIAL HALL Jill Uhlhorn Bookings Secretary 01935 829513

PARISH COUNCIL Clerk: clerk@stoke-sub-hamdon-pc.gov.uk

STOKE & DISTRICT ANGLING ASSOCIATION  
Derek Goad 01935 824337 goadfish02@gmail.com

STOKE AFTERNOON TEA CLUB FOR OLDER PEOPLE at Lighthouse Café  
Lisa Wenborn 07515 489587 or Kay Clamp 07717 453523

STOKE COMMUNITY SHOP & POST OFFICE COUNTER 01935 509100

STOKE SUB HAMDON BAND at Castle School Gill Robins 07814 115763

STOKE SUB HAMDON BAND TRAINING SECTION Jane Herbert 01460 351123

STOKE SUB HAMDON SPORTS & RECREATION TRUST  
www.stoke-rec-trust.co.uk Chair – John Allan info@stoke-rec-trust.co.uk  
Secretary - Peter Hulett 01935 824784

STOKE PERFORMING ARTS GROUP Jeanie 07967 184952  
info@stokeperformingartsgroup.co.uk

STOKE WALKING GROUP Penny 01935 822208 or Sue 07792 311736

TINY TURRETS at Castle Primary School Foundation Stage Unit  
for 2 - 4 year olds. 01935 826739.

TRIANGLE TRUST (Raising funds for Hamdon Medical Centre)  
Jennie Harris 01935 881718 or David Warry 01935 822271  
trevorharris55@btinternet.com web: www.thetriangletrust.org

VILLAGE ARTISTS GROUP Chair - Andrew Toosey 07484 142880  
SSHthevillageartistsgroup@gmail.com

## DATES FOR YOUR DIARY

### JANUARY

- 4th Longer Health Walk from Lighthouse café (5-6 miles, option of pub lunch). Meet 09:50
- 4th Brownies – every Tuesday at HF&YC during term time
- 4th Football Senior Team training - every Tuesday 18:30
- 6th Stoke Band Training Section every Thursday at Castle School 19:00 – 19:45
- 6th Stoke Band every Thursday at Castle School 20:00 – 22:00
- 8th Village Artists Group Drawing Workshop at the Memorial Hall 10:00 – 15:00
- 10th Make Every Step Count Walk (40 minutes) from Lighthouse café. Meet 09:30
- 10th Medium Health Walk (3-4 miles) from Lighthouse café. Meet 09:50
- 12th Afternoon Tea Club at the Memorial Hall 14:15 – 16:15
- 15th Film Night at the Memorial Hall from 18:00
- 17th Hamdon Youth Group at HF&YC 18:30 – 20:30
- 20th Parish Councillor Surgeries at 7, North Street 10:00 – 12:00 & 18:00 – 20:00
- 22nd SPAGTACULAR at the Memorial Hall, 14:30 & 19:00
- 24th Medium Health Walk (3-4 miles) from Lighthouse café. Meet 09:50 for 10:00 start
- 24th Make Every Step Count Walk (40 minutes) from Lighthouse café. Meet 09:30
- 26th Afternoon Tea Club at the Memorial Hall 14:15 – 16:15
- 26th Gardening Club - Talk on Garden Folklore at the Memorial Hall, 19:00
- ### MARCH
- 12th Afternoon Tea Club at the Lighthouse café 14:15 – 16:15

Please send information for the Village Newsletter to helenfrances.one@gmail.com by 16th of the month before publication. If you would like a larger print copy of this newsletter please contact helenfrances.one@gmail.com with your name and address. The Village Newsletter is produced with grateful thanks to Stoke-sub-Hamdon Parish Council for funding and support.